

Technical Data Sheet



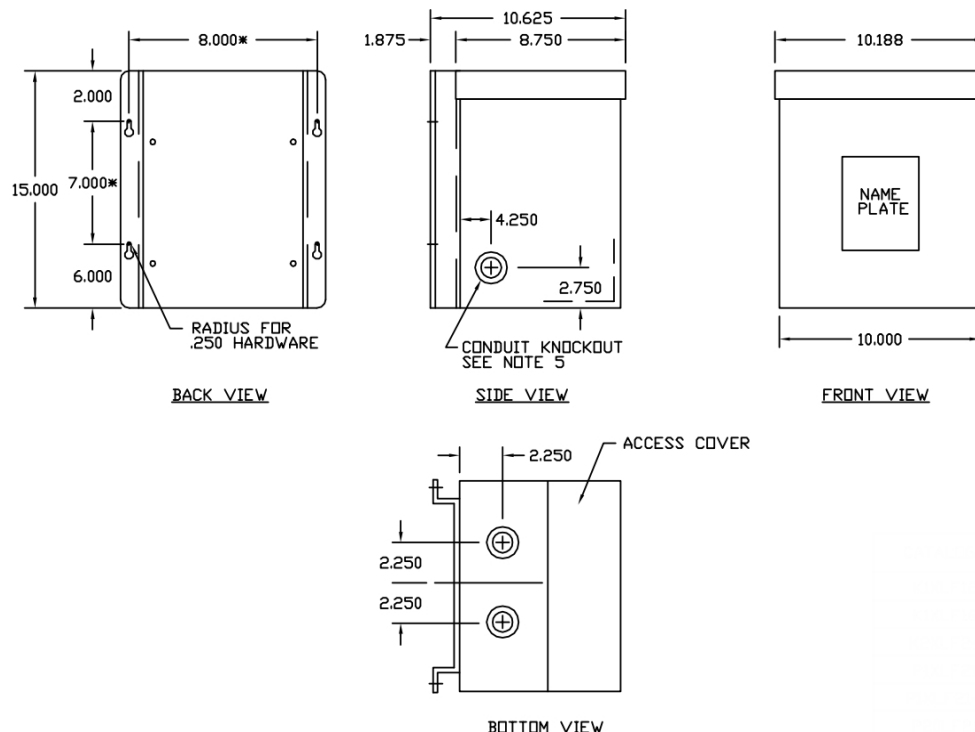
Catalog No. K1XLF16-5

Characteristics	
Phase	1
KVA	5
Primary	120X240V
Secondary	16/32V
Conductor	Aluminum
Temp. Rise	115° C
Frequency	60 HZ
Taps	None
ESS	No
Insulation	180° C
Weathershield	N/A
Wall Bracket	Built-In
Weight(lbs)	110
Sound(dB)	40

Notes	
All units are UL listed and are designed in accordance with applicable NEMA, ANSI and IEEE standards.	
Transformers are dry-type AA, non-ventilated NEMA 3R enclosure.	
Transformers are wall mounted. Wall mounting bracket is built into the enclosure.	
Paint color is ANSI 61.	

AMP Ratings	
Line In (Load) @ 120V	41.7A
Line In (Load) @ 240V	20.8A
Load (Secondary) @ 16V	312.5A
Load (Secondary) @ 32V	156.3A

Winding Diagram - 10B		
<p>PRIMARY</p> <p>H1 H3 H2 H4</p> <p>X4 X2 X3 X1</p> <p>SECONDARY</p>		
VOLTS	CONNECTIONS	LINE LEADS
240	H2-H3	H1, H4
120	H1-H3, H2-H4	H1, H4
32	X2 - X3	X1, X4
16	X1-X3, X2-X4	X1, X4
When used as an isolation transformer		



Outline No: 05A1465